



Tree Program

Sponsored by Palmyra Parks & Recreation Department

Plant a Tree as a **LIVING MEMORIAL OR IN HONOR OF A SPECIAL OCCASION**

Your gift of a Living Tree will improve the quality of life within the Palmyra Parks and make a long-lasting contribution to the beauty of Flower City Park. A Tree is a beautiful way to honor a loved one, mark an anniversary or special occasion and/or recognize an event, club or organization or significant achievement.

TREE TYPE SELECTION

Tree will be chosen working with the Park Department; every effort will be made to adhere to the tree planting plan adopted by the Palmyra Park Board.

Trees will be planted in Spring and Fall according to grower recommendations for the particular species. Trees will be closely monitored and professionally maintained by Palmyra Park staff. Tree forms will be due by March 20th for spring planting and by September 22nd for Fall planting.

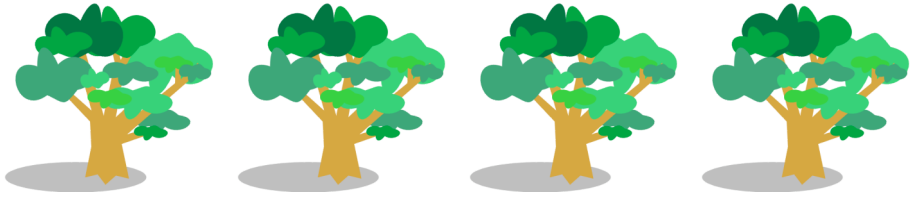
Depending upon availability, tree type selection includes, but is not limited to, the following varieties: *Autumn Blaze Maple, Legacy Maple, Red Sunset Maple, October Glory Maple, Red Oak, Swamp White Oak, Bloodgood Planetree, Skyline Honeylocust, Sweetgum, River Birch*. Trees will be approximately 1 ½ “caliper and approximately 6’ tall when planted.

PURCHASING PROCEDURES

1. Contact the Palmyra Parks Department at (573)769-9534 to indicate interest in purchasing a tree to be planted in the park.
2. The Park Director will contact you regarding the tree type and planting location.
3. Complete order form.
4. Make check payable to the Palmyra Parks & Recreation Department.
5. Mail order form with payment or take by City Hall. (attention Park Director)
6. Once a tree is planted, donors will be notified. Please note that due to liability, the Palmyra Parks and Recreation staff will be the only ones authorized to plant trees. Nursery planting may occur with permission from Parks Director. No planting of trees by private individuals please.
7. If desired a brass leaf will be placed on the Tree Plaque in the Sesquicentennial Building.

For more information regarding the Memorial Tree Program, please call (573)769-9534

palmyraparksandrec@centurytel.net



Tree Program Donation Form

DATE	
------	--

TYPE OF TREE	
--------------	--

COST OF TREE	\$100
LEAF PLATE (Optional)	\$10

DONOR NAME	
------------	--

ADDRESS	
---------	--

CITY		STATE		ZIP	
PHONE					

Information to be included on leaf plate (Optional)

EXAMPLE:
IN MEMORY/HONOR OF: JOHN DOE
RED OAK
FLOWER CITY PARK
JANUARY 2009

DONOR SIGNATURE _____ DATE _____